

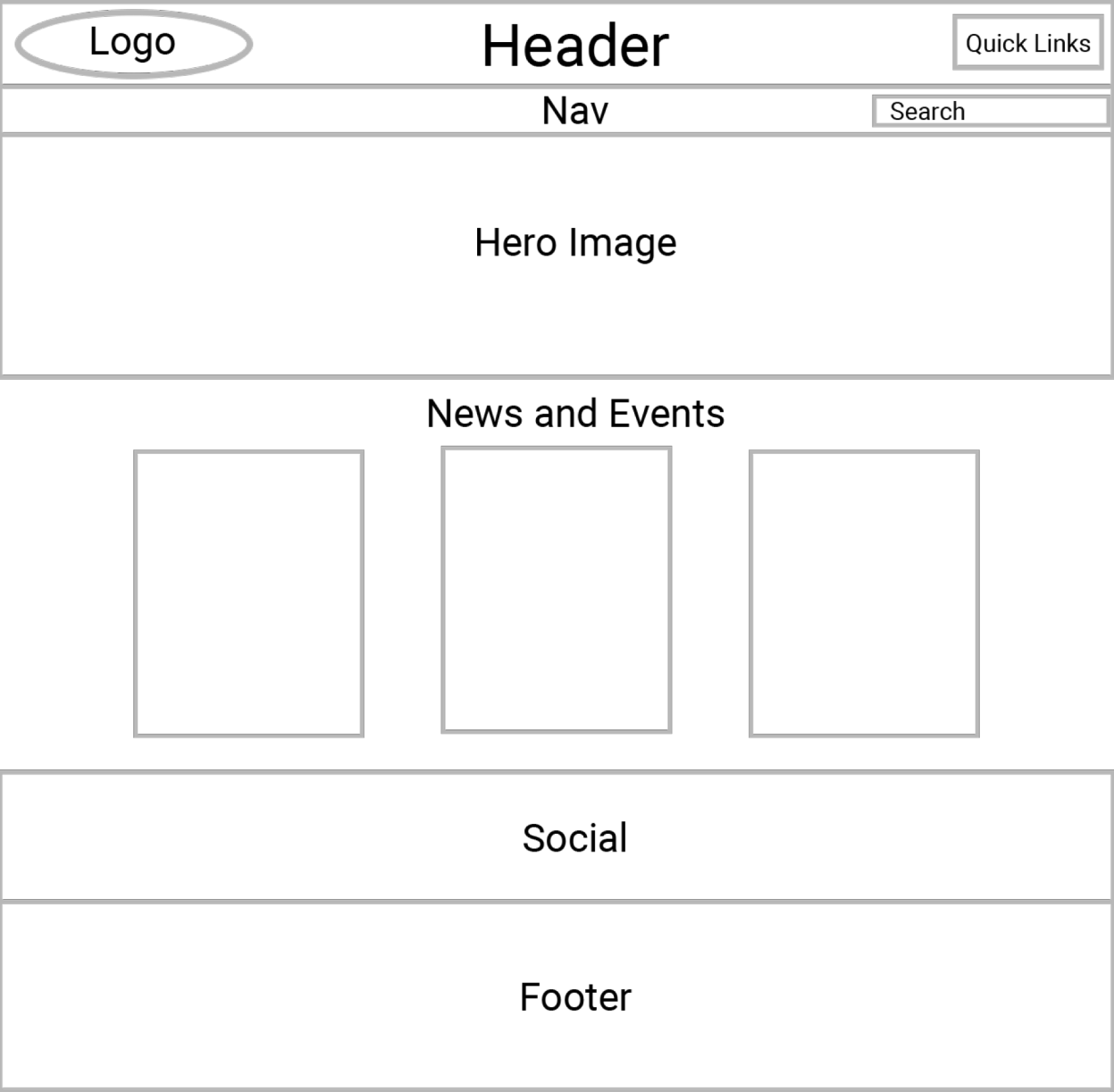


# **UX TIPS TO MAKE YOUR WEBSITE NOT SUCK**





**I'm Josh**





News/Events

Academics

Admission

Research

Athletics

Alumni

Giving

President

About ASU ▾

## No. 10 in the U.S. for undergraduate teaching

Opportunities for undergraduates to conduct research and the use of creative learning models such as project-based and adaptive learning has led ASU to be named a top ten school for undergraduate teaching.

[Find out more](#)

Find my degree program:

☐ Undergraduate ☐ Graduate

**Times Higher Education ranks  
ASU in the top 1 percent of**

**Contact my admissions  
representative:**



## Estimating occupancy

Plan uses mobile data for energy efficiency



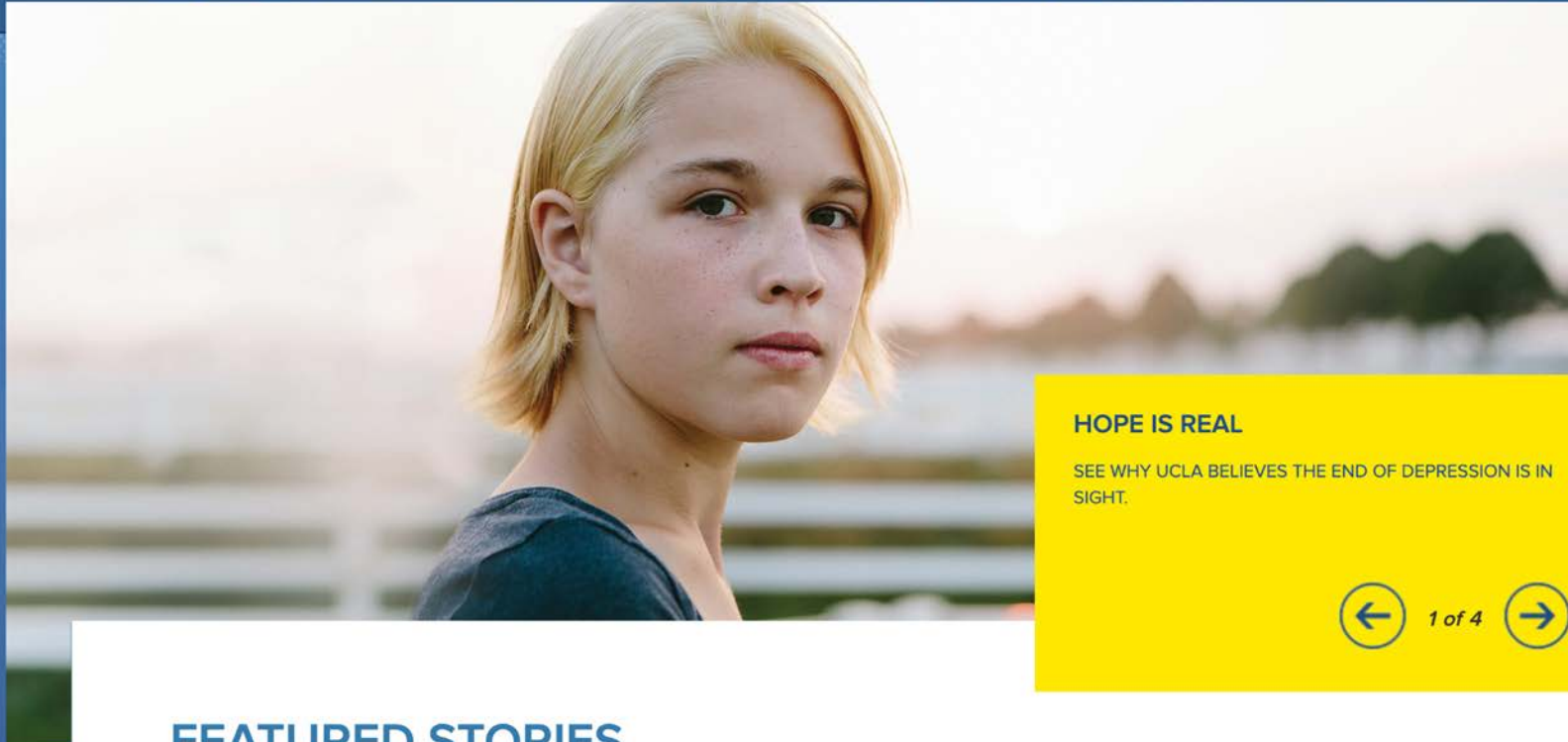
### EVENTS

OCT  
**11**

Conference: Fifth  
Annual CDAR  
Symposium 2019

OCT  
**11**

Presentation: Ian Haney  
López — Merge Left:  
Fusing Race and Class,



## HOPE IS REAL

SEE WHY UCLA BELIEVES THE END OF DEPRESSION IS IN SIGHT.



## FEATURED STORIES



**Bruin pulse to CicLAvia**  
Open-streets event celebrates



**UCLA: Our Stories, Our Impact**



**Bruins go global for Volunteer Day**





About

Academics

Admissions

Research

Visit

Students

Faculty

Staff

Families

Alumni



Scene at CU: Fall convocation, family fun and fluffy flakes 

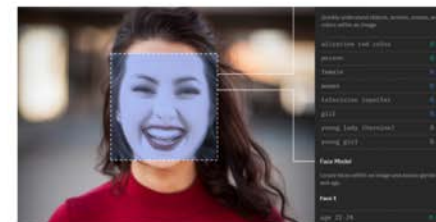
## CU Boulder Today



**Alumni in Focus: Music education**  
Buffs take their passion to area public schools



**Sub-2 marathon barrier could fall this weekend, study suggests**



**Facial recognition software has a gender problem**



[Academics](#)

[Research](#)

[Admissions & Financial Aid](#)

[Duck Life](#)

[About](#)

# Opening Doors to Student Success

The new Willie and Donald Tykeson Hall welcomes students offering expanded advising, career and academic support

Something for Every Student

## LGBTQIA+: A Campus for All

"Coming out is never a single day or event – it is  
a door that, once open, never closes."

## Realizing a Dream of Generations





## **Reason 1:**

“Look what they’re doing!”

## **Reason 2:**

Fear of the Unknown

Central Michigan University

My Site Site Settings Help

Home Academics Career Development Finances University Life Resources

All sources

Registration

Blackboard

Webmail

Directories

News

Help

My Site

Logout

News and Announcements

CMU Headline News

All portal users

Welcome to the CMU Portal!

The portal serves as a secure, single sign-on location where students, employees and alumni can check email, register for courses, complete financial transactions and keep up-to-date on life here at CMU! Our Goal is to be user-centric, proactive and efficient with maximum online availability.

NOTICE

Data validations are still in process.

Data appearing on your Academic History, your Class Schedule and the Course Search has been converted from the old student system. This data is still being validated. If you happen to encounter a discrepancy, please check it again in a week.

CMU

Your New Campus ID

All students will be assigned a new, unique Campus ID as part of the Campus Management system. Read more...

ALERT

Close your browser to secure your information!

Avoid leaving browser sessions open...

CMU

MySite - Your own personal web space!

Be sure to click on "Help" to find out more about MySites, and click on "MySite" in the upper-right corner to create your personal web site within the portal!

Who doesn't love cookies?

Set your browser to accept cookies from the Portal...

My Alerts Summary

There are no alerts to display.

Is the Portal better than OASIS?

Respond to this Survey Export Results to a spreadsheet

Friday, June 30, 2006

**CMU TO HOST MULTICULTURAL JOURNALISM SYMPOSIUM**

Central Michigan University will host a meeting of journalistic minds when dozens of professional journalists and journalism educators gather for a discussion of multiculturalism in their field. [Read the Story](#)

Thursday, June 29, 2006

**CHIPPEWAS NAME ZEIGLER MEN'S BASKETBALL COACH**

Three months after helping lead UCLA to the NCAA title game, Ernie Zeigler has been tabbed to help lead the Central Michigan University Chippewas back to the top of the Mid-American Conference. [Read the Story](#)

Thursday, June 22, 2006

**TRANSLATION COMPANY FROM MIDLAND BECOMES AFFILIATE OF CMU RESEARCH CORP.**

A Midland-based translation company is the newest affiliate of Central Michigan University Research Corporation's Technology Business Accelerator Program. [Read](#)

CMU

Course Search and Registration

Search Courses

Academic Term: Spring 2017

Department: Select Department

Keyword: Course, Section, Instructor, Title, Q&W, Location...

Search

Filter Search Results

Campus: Online All Resources Global

Availability: Additional Filters

Search for courses above. Your search results will show up here.

My Course Week

Other 87 689

Time Sun Mon Tue Wed Thu Fri Sat

8am

9am

10am

11am

12pm

1pm

2pm

3pm

4pm

5pm

6pm

7pm

8pm

9pm

and Registration

Take a Tour

My Course Week

Quickly identify desirable sections of a course and see how planned classes fit into your week.

Close

CMU

Course Search and Registration

Academic Term: Spring 2017

Department: Select Department

Keyword: Course, Section, Instructor, Title, Q&W, Location...

Search

Filter Search Results

Campus: Online All Resources Global

Availability: Additional Filters

Search for courses above. Your search results will show up here.

My Course Week

Other 87 689

Time Sun Mon Tue Wed Thu Fri Sat

8am

9am

10am

11am

12pm

1pm

2pm

3pm

4pm

5pm

6pm

7pm

8pm

9pm



### **Reason 3:**

We want it to be visible

**Reason 4:**  
Bureaucracy

## **Reason 5:**

We have technical limitations



**UX Myth:**  
"More menu items is better"



Report Sexual Misconduct →

Search web and directory 🔍

FOR:

PROSPECTIVE STUDENTS

CURRENT STUDENTS

FACULTY & STAFF

PARENTS

ALUMNI

QUICK LINKS



About

Academics

Life at Michigan

Athletics

Research

Health & Medicine

Initiatives

Giving

U-M // LSA // Departments and Units // Majors and Minors // LSA Gateway

U-M College of LSA



About

Academics

Research

News and Events

Support LSA

🔗 Course Guide

🔗 Give Online

for

Prospective Students

Current Students

Alumni and Friends

Faculty and Staff



MICHIGAN STATE UNIVERSITY

Apply

Visit

Give

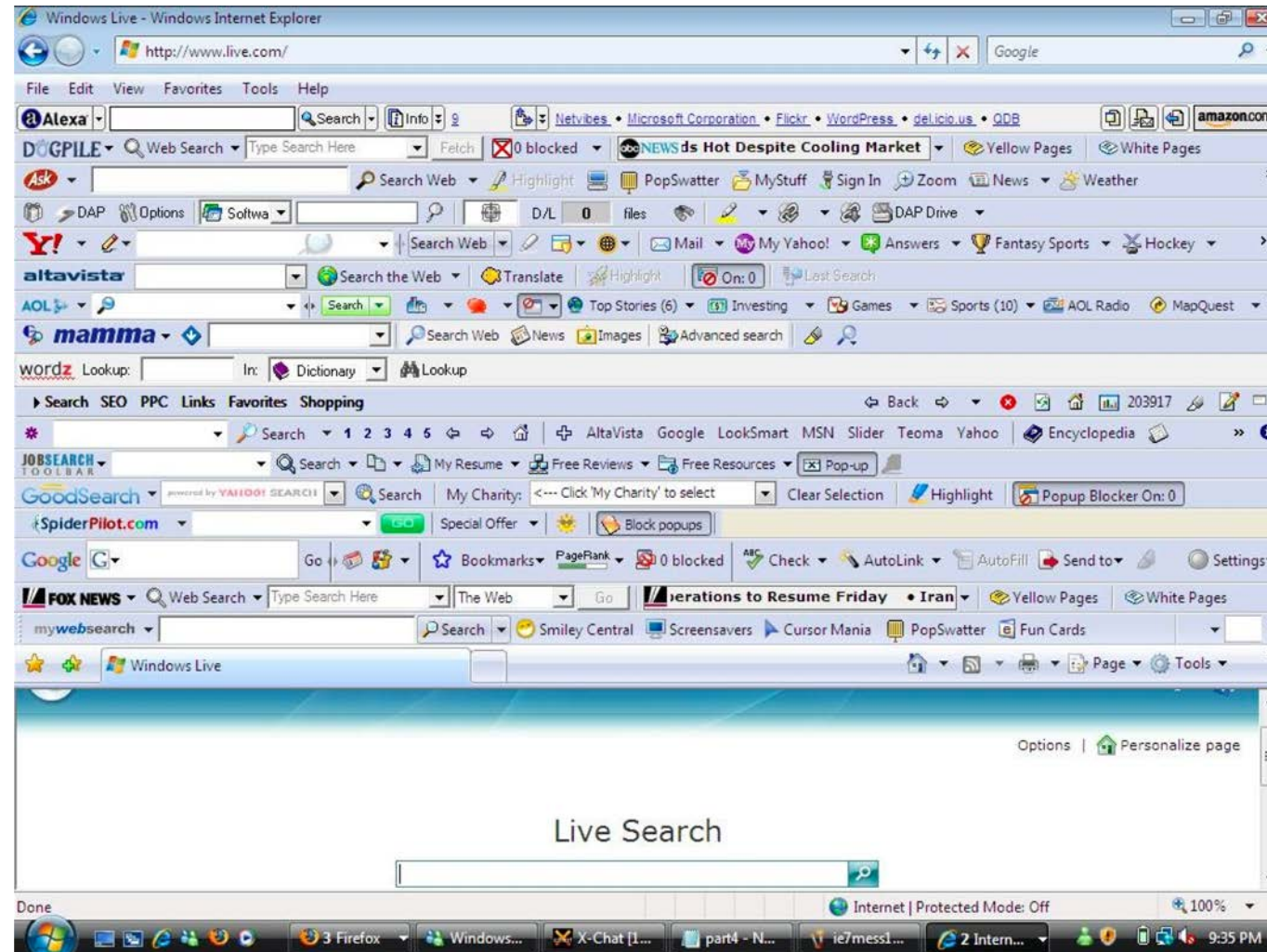
Search for people, places and more...



About | Admissions | Academics | Research | Campus Life | Athletics

MSUToday

STUDENTS | ALUMNI | FACULTY & STAFF



SOURCE





I AM  
**LING**  
YOU CAN  
TRUST ME

### Menu

Home

Cars

Vans

Customers

About Ling

Fun stuff

Free stuff

Live staff

CARS  
A-Z



I live inside my car leasing website all day Monday to Friday 9am-6pm. I lease the cheapest PCP and contract hire cars in the UK! - I am Ling, accept no substitutes

# LINGSCARS.com



Leader of the Pack - The UK's favorite car leasing website!

Contract hire cars from Ling Valentine, LINGSCARS is the UK's favourite car leasing website - On 2016 I leased over £85 million in cars! (RRP)

**Stop**

"Believe it or not, this Gateshead-based website, featuring Mrs Ling jiggling on her motorbike, is one of the biggest online drivers of car sales in Great Britain" **25th July 2017**

**4 News**

**Leader of the Pack**

"[Ling Valentine is] Britain's **BIGGEST** individual seller of new cars."

**BREXIT RISK FREE!** February 2017 **the guardian**

**LING'S BREXIT BORIS PROMISE:** If the UK leaves the EU with "no deal", tariffs may apply to EU built cars landing in



**9 DELIVERIES  
LAST WEEK**

Citroen C3  
To **Garry**  
SCARBOROUGH

Peugeot 3008 E  
To **Blake**  
ALDERSHOT,

Citroen C5 Airc  
To **Ann**  
BRISTOL, BSS

Skoda Karoq Es  
To **Andy**  
MILTON KEY

VW Touareg Es  
To **Tgolf Lt**  
SANDBACH, I

Seat Ibiza  
To **Gary**  
ASHFORD, TI

Skoda Octavia E  
To **Daniel**  
DUKINFIELD,

Skoda Octav  
To **Richard**

“

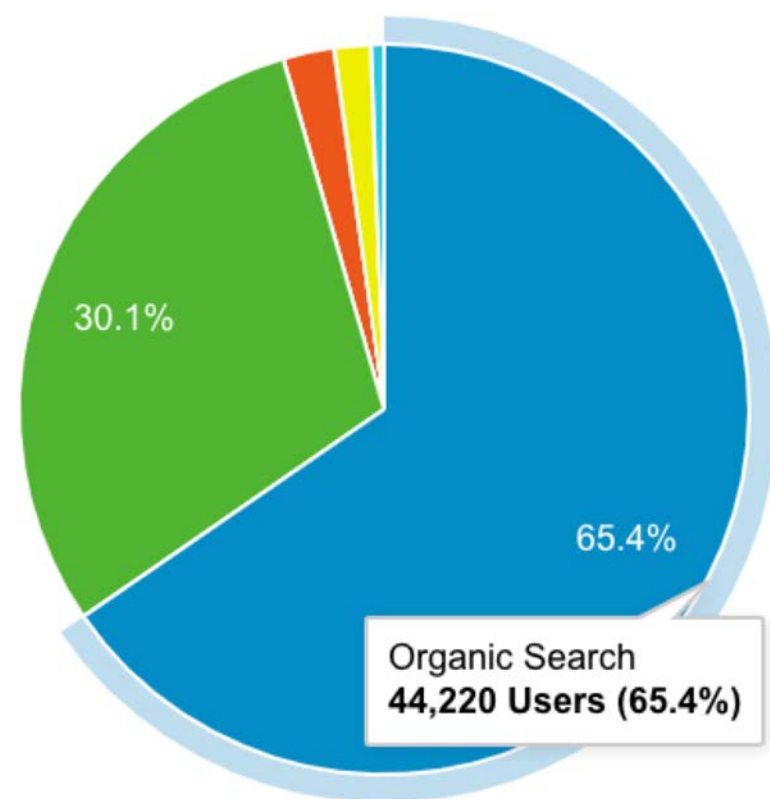
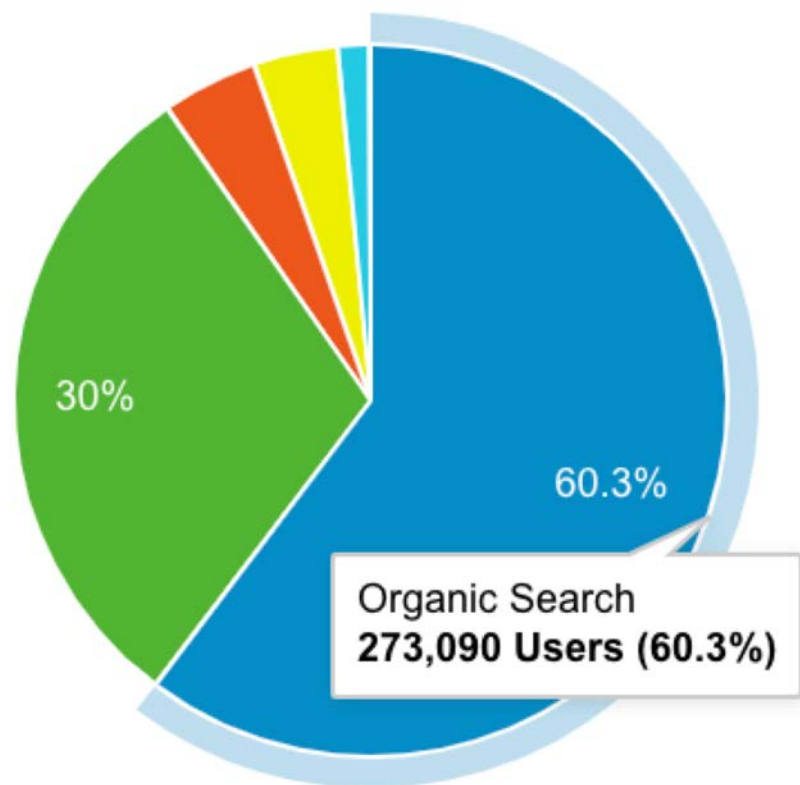
---

*“Thanks for introducing me to Lingscars.com. I now know what good web design is and I aspire to be like Ling.”*

**- Student that failed**





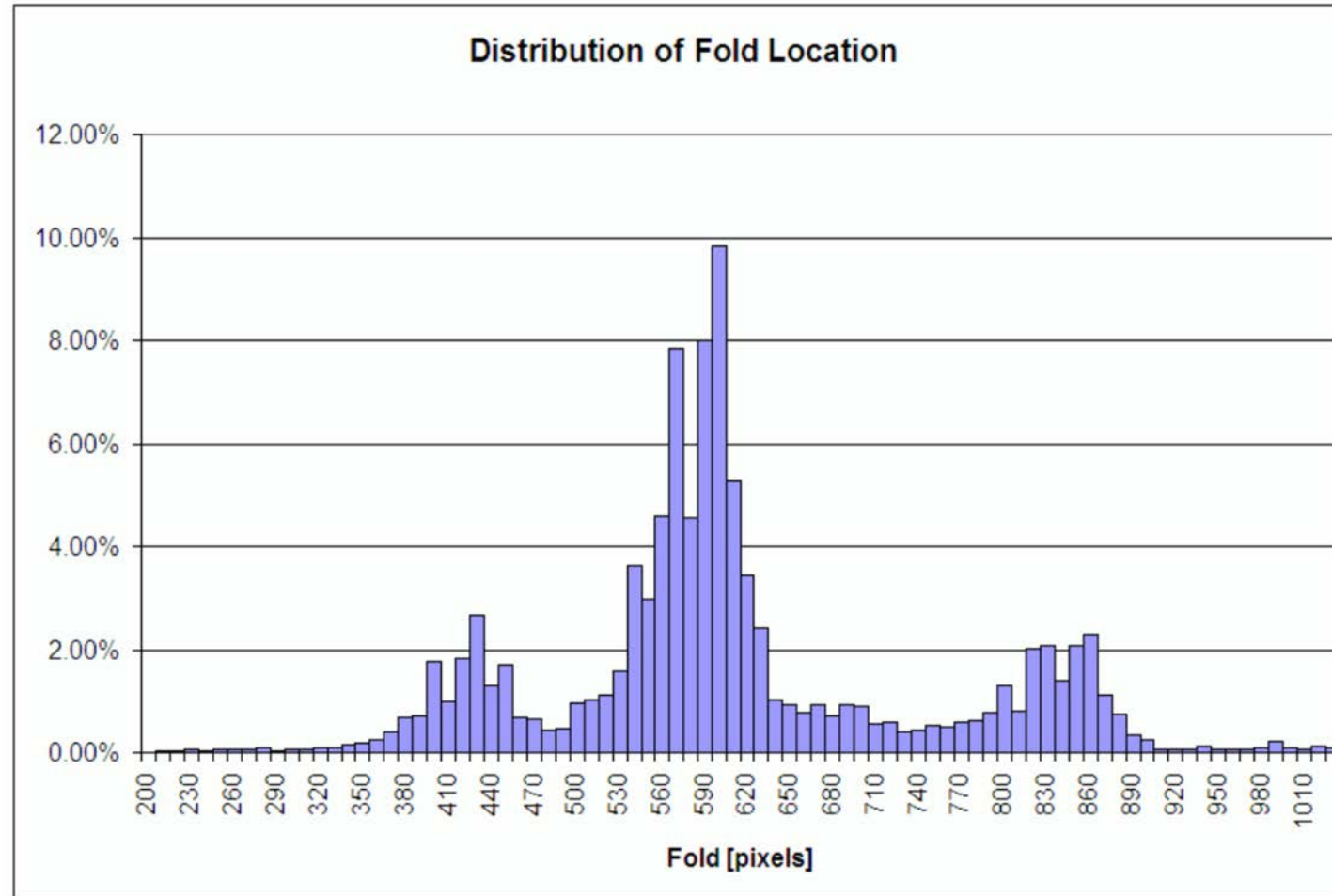


**UX Myth:**  
Users don't scroll



**Give up on the fold**

Clicktale analyzed data from 120,000 page views and found that of the 91% of page views on pages that had a scroll bar, 76% had some scrolling action, and 22% scrolled to the bottom of the page.



Source: [Clicktale – Unfolding the insights into webpage scroll](#)

Average Fold: 798px

## The Wonder of Why

At LSA, we wonder. We wonder why we are here. We ask how the universe works, and how we organize societies. We all wonder—but the great professors and students use curiosity as a catalyst to find answers to the biggest questions. Wonder begins with a simple “why” and leads to discovery that advances science and society while shaping our world for the better.

### HUMANITIES

Breakthroughs in understanding the human experience

Discover

### NATURAL SCIENCES

Fundamental questions about nature, Earth, and the universe

Dig in

### SOCIAL SCIENCES

Unraveling the mysteries of people, society, and relationships


Make connections

30%

## Department *NEWS*

28%

### HUMANITIES

- Books for the Beach
- von Moltke to Give Berlin Program GSA Distinguished Lecture
- LSA Professor Contributes to MLA, GSA, and DAAD
-  Popularity: 24% Impressions: 565 ⓘ
- Toeboesch Publishes Article

[All News](#)

25%

### NATURAL SCIENCES

- Physicist Roy Clarke and International Team Devise Way Which Shows How Common Elements Can Make a More Energy-Secure Future
- Professor Stephen Forrest named Henry Russel Lecturer for 2020
- Books for the Beach
- Professor Steven Cundiff Discusses Quantum Information Science at the White House
- Five U-M Physics Faculty Recently Promoted

[All News](#)

24%

### SOCIAL SCIENCES

- Books for the Beach
- Does Head Start Give Kids a Head Start?
- U-M Students Named Boren Fellows for 2019-2020
- It's a Big Deal
- In the Trap of Luxury

[All News](#)

23%

21%



**Give up on carousels**



Baryshnikov Arts Center

## About BAC

BAC is the realization of a long-held vision by artistic director Mikhail Baryshnikov, who sought to build an arts center in New York City that would serve as a gathering place for artists from all disciplines. BAC's opening in 2005 heralded the launch of this mission, establishing a thriving creative space for artists from around the world. Located in the Hudson Yards neighborhood of Manhattan, BAC comprises a total of 20,000 square feet, including the 430-seat Jerome Robbins Theater, which opened in 2010, the Howard Gilman Performance Space, a black-box performance space housing 100 people, four studio-free studios and office space. BAC serves approximately 600 artists and more than 25,000 audience members annually through presentations and artist residencies.



On behalf of Baryshnikov Arts Center, Artistic Director Mikhail Baryshnikov and Chairman of the Board Diana DiMenna submitted this Statement of Support for the National Endowments for the Arts and Humanities to our congressional representatives in the U.S. Senate: Senator Charles Schumer and Senator Kirsten Gillibrand, and the Manhattan Delegation of the U.S. House of Representatives: Representative Adriano Espaillat, Representative Jerrold Nadler, Representative Carolyn Maloney, and Representative Nydia Velázquez.

(Submitted April 3, 2017.)

[Read BAC's Letter of Support for the National Endowments for the Arts and Humanities](#)

## BAC Presents

BAC Presents is a series of innovative performances by local and international dance, music, theater, and multimedia artists. BAC's spring season runs January through June, and the fall season runs September through December, with performances held in the Jerome Robbins Theater and Howard Gilman Performance Space. BAC is dedicated to building audiences for the arts by presenting contemporary work at affordable ticket prices.

[UPCOMING PERFORMANCES](#)



## BAC Artist Residency Program

Supporting artists is central to BAC's mission. BAC hosts up to 30 residencies a year, providing dance, theater, music, and multimedia artists with the space and resources to research and develop new projects and collaborations. Artists are free to explore their creative endeavors, with BAC staff available to provide administrative and technical support.

[CURRENT ARTISTS](#)



## BAC After School

BAC After School is an arts education program for students from New York City public high schools. Nominated by teachers from partner schools, students engage in production workshops in BAC's theater, critical responses to performances they attend at BAC and other venues such as Danspace Project, New York Live

NNGROUP.COM **NN/g**





# NO!!!

seriously, you really shouldn't



Built by [@jared\\_w\\_smith](#) | Powered by [WebAIM](#) | [Q&A about this web site](#)

<http://shouldiuseacarousel.com/>

**Give up on the 3-click rule**

“

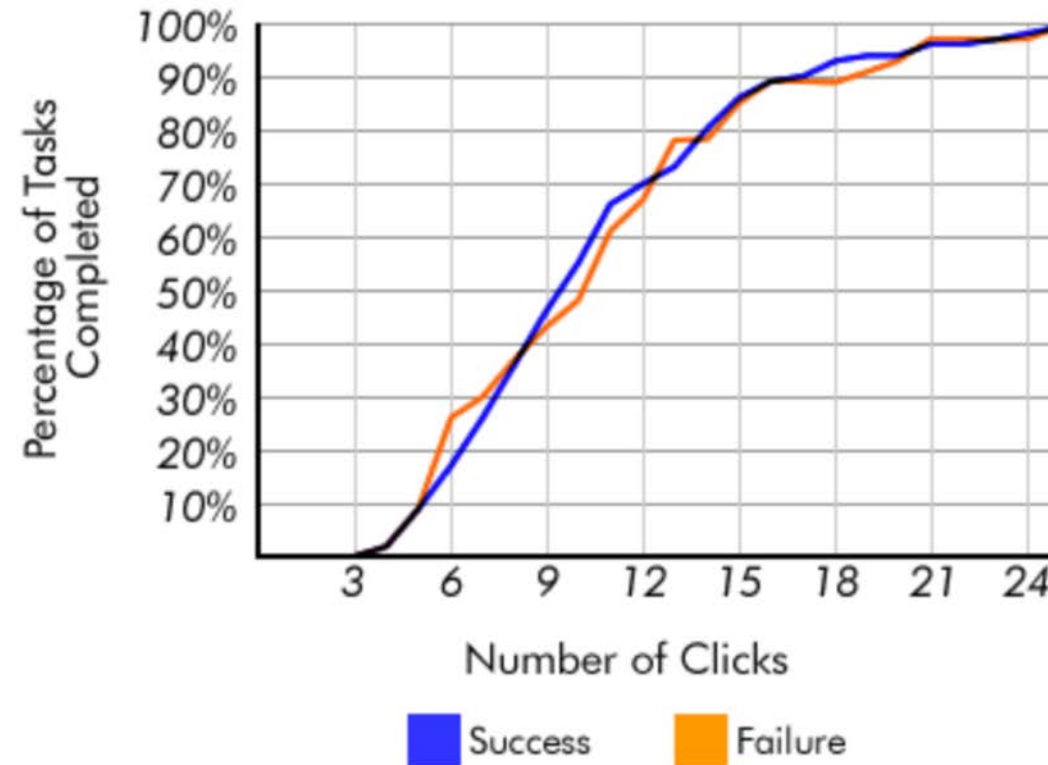
---

*“If there is a scientific basis to the Three-Click Rule, we couldn’t find it in our data. Our analysis left us without any correlation between the number of times users clicked and their success in finding the content they sought.”*

**- Joshua Porter**

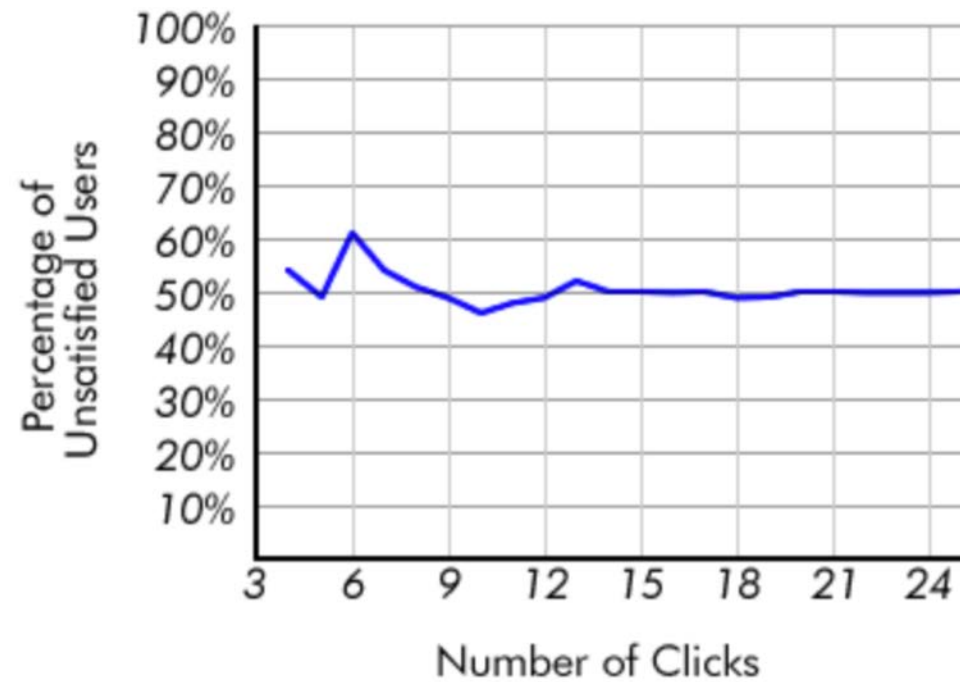


## Clicks to Completion



Source: [https://articles.uie.com/three\\_click\\_rule/](https://articles.uie.com/three_click_rule/)

### Dissatisfaction by Task Length



Source: [https://articles.uie.com/three\\_click\\_rule/](https://articles.uie.com/three_click_rule/)

# Designing for the **Scent** of Information



**URLs are UX**  
**Link text is UX**  
**Breadcrumbs are UX**  
**Headings are UX**



URLs are UX





# Breadcrumbs are UX

 | [CURRENT STUDENTS](#) | [UNDERGRADUATE](#) | [EDUCATION](#) | **[APPLIED LIBERAL ARTS \(ALA\)](#)**

To download W3C's editor/browser Amaya, [click here](#).

## Link text is UX

To download Amaya, go to the [Amaya Website](#) and get the necessary software.



# Headings are UX

```
<h1>Heading 1</h1>  
  <h2>Heading 2</h2>  
    <h3>Heading 3</h3>  
<h2> Heading 2</h2>  
  <h3>Heading 3</h3>  
    <h4>Heading 4</h4>
```

## **UX TIP 1:**

Design for your users

**Create a story**





BROOKLYN COLLEGE  
FEIRSTEIN GRADUATE SCHOOL OF CINEMA  
STEINER  
STUDIOS

[ADMISSIONS](#)

[ACADEMICS](#)

[FACILITIES](#)

[ABOUT US](#)

[FAQ](#)

[DONATE](#)

[CONTACT](#)



**MAKE A  
SCENE**

Below the text is a decorative horizontal line consisting of a series of slanted parallel bars in orange and yellow.

**APPLY  
NOW  
FOR FALL 2020**

DEADLINE FOR PRIORITY CONSIDERATION: JANUARY 15,  
2020

THEREAFTER, APPLICATIONS ACCEPTED ON A ROLLING  
ADMISSIONS BASIS UNTIL PLACES ARE FILLED.



BROOKLYN COLLEGE  
FEIRSTEIN GRADUATE SCHOOL OF CINEMA  
FEIRSTEIN  
STUDIOS

ADMISSIONS

ACADEMICS

FACILITIES

ABOUT US

FAQ

DONATE

CONTACT

# ADMISSIONS

# APPLY NOW FOR FALL 2020

DEADLINE FOR PRIORITY CONSIDERATION: JANUARY 15, 2020

THEREAFTER, APPLICATIONS ACCEPTED ON A ROLLING ADMISSIONS  
BASIS UNTIL PLACES ARE FILLED.

FOR MORE INFORMATION, CONTACT [GRADUATE ADMISSIONS](#)  
AT 718.951.4536 OR E-MAIL [FEIRSTEIN@BROOKLYN.CUNY.EDU](mailto:FEIRSTEIN@BROOKLYN.CUNY.EDU).

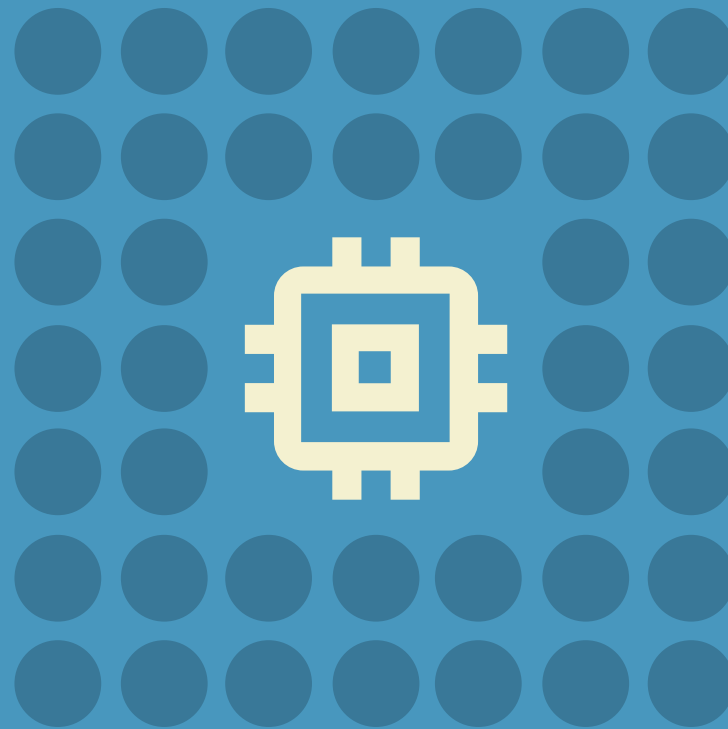
[VIEW UPCOMING INFORMATION SESSION DATES](#)

[CHECK OUT OUR DIGITAL ANIMATION AND VFX PROGRAM!!](#)





# Hick's Law



LAMSOFTUX.COM

The time it takes to make a decision increases with the number and complexity of choices.

Q SEARCH

Campus Directory Map Library

RESOURCES FOR: STUDENTS FACULTY & STAFF ALUMNI PARENTS

GIVE NOW



About

Admissions

Academics

Research

Outreach

International

Arts & Culture

Athletics



ATHLETICS

Illinois has 10 men's NCAA teams and 11 women's NCAA teams with 15 major facilities.



THE UNIVERSITY  
OF ARIZONA

I am



GO

VISIT

VIRTUAL TOUR

APPLY

ADMISSIONS ▾ ACADEMICS ▾ RESEARCH ▾ STUDENT LIFE ▾ ABOUT ▾ LEADERSHIP ALUMNI ▾ GIVE ▾ ATHLETICS

## YOU DO YOU

Discover life at Arizona — the clubs, classes and activities that will help you be your best self.

WILDCAT LIFE



Majors & Degrees



Cost & Aid



Visit



Request Info



## **UX TIP 2:**

Know who you're creating for



**Refrain from Acronyms or Insider Terminology**



## Acronyms Decoder

SAB, SSWB, CCRB, OSCR - what? New students and veterans alike all occasionally have trouble deciphering the plethora of acronyms that the University of Michigan uses for its buildings, locations and programs. Use this tool to decode any and all acronyms you might stumble upon throughout the course of your University experience.

**Acronym name**

Search

Reset

### **UX TIP 3:**

Back up your claims with data

“

---

*“The two most common mistakes I see – or let’s call them opportunities for improvement – are not paying attention to the data and treating a website as a discrete project instead of an ongoing process.”*

**- Voltaire Santos Miran, CEO, mStoner**

## **Focus Groups and User Testing**




**Focus Groups is NOT User Testing**

The how-to companion to the bestselling *Don't Make Me Think!*  
*A Common Sense Approach to Web Usability*

Steve Krug

# ROCKET SURGERY MADE EASY



The Do-It-Yourself Guide to Finding  
and Fixing Usability Problems

**Analytics**

## **UX TIP 4:** Consistency

“

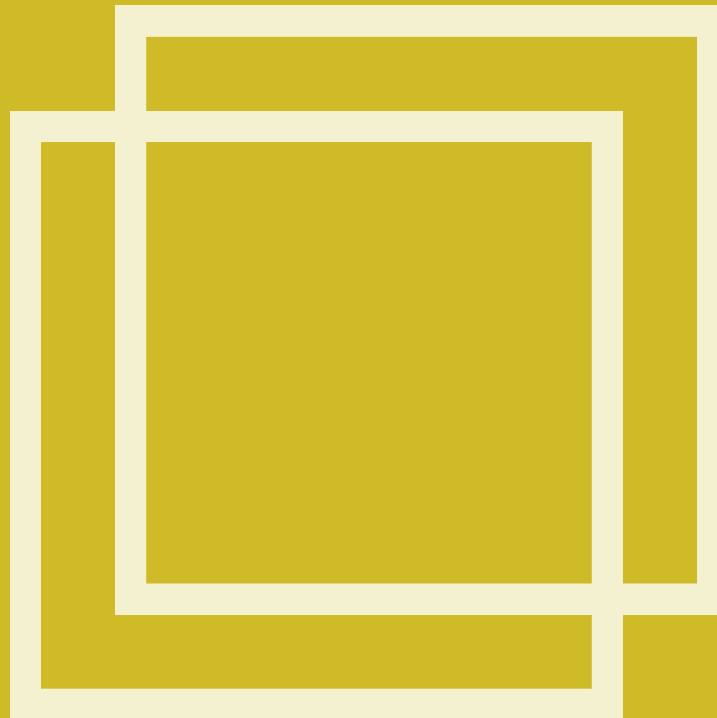
---

*“After all, if the user learns to operate the design in one place, why not have that knowledge transfer to the next. This is all good. But wrong.”*

**- Jared Spool**



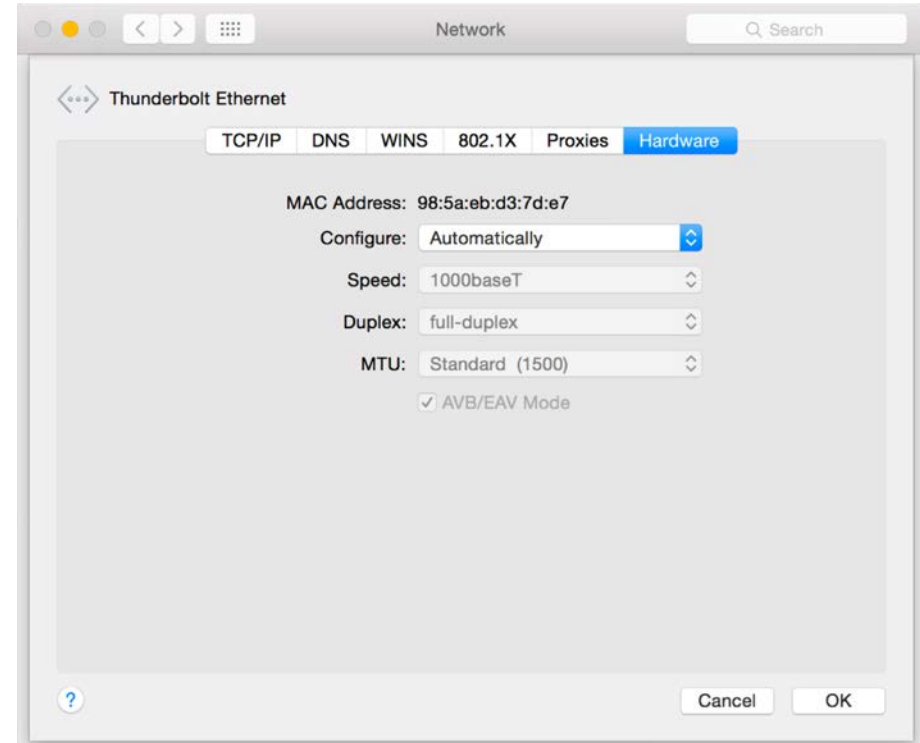
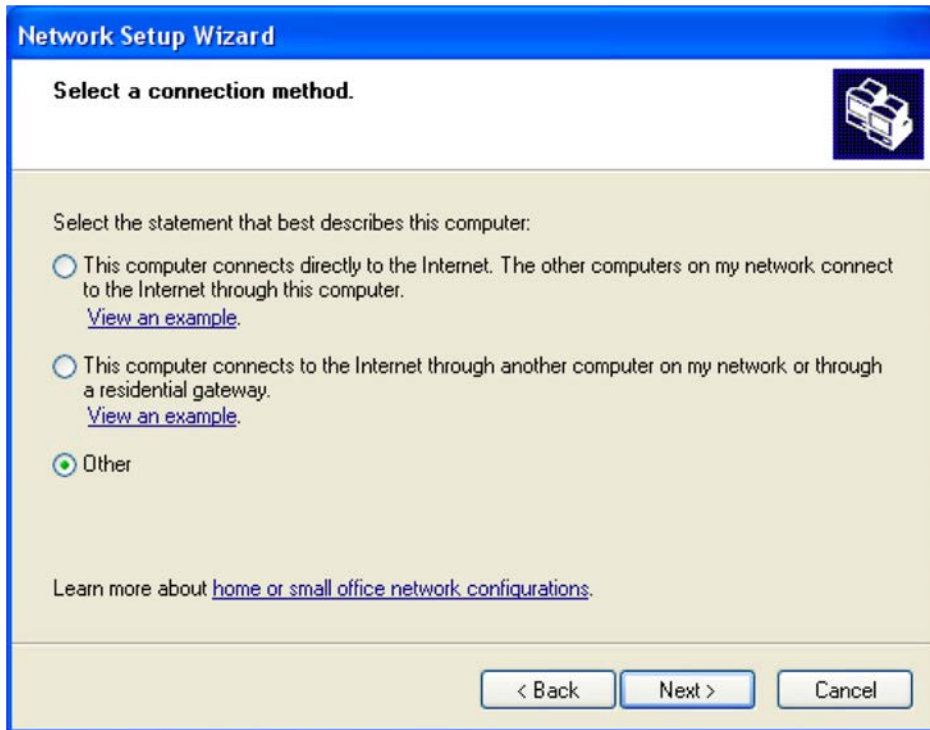
# Jakob's Law



LAMSOFOX.COM

Users spend most of their time on other sites. This means that users prefer your site to work the same way as all the other sites they already know.





SAVE

CANCEL

SAVE

CANCEL

Already registered? [Sign in here.](#)

**Username\***

must contain only alphabets,numbers and underscore

**E-mail\***

**Password\***

**Password (again)\***

must contain 8 or more characters with atleast one capitalized and special character

**first name**

**last name**

\*

☐ I have read and agree to the Terms of Service

★ Sign Me Up!

## **UX TIP 5:** Prioritize Content

**Abby**

**American high school senior**

**Wants to study business**

**Stock photo model**

**Likes to use Comic Sans  
in her spare time**



Undergraduate



Enter Keywords

Find Degree



## Postgraduate Open Evening

Register now to have a personalised discussion about your postgraduate study options at Aberdeen.



### Undergraduate

At the University of Aberdeen we offer a flexible and individual approach to your studies.

### Postgraduate Taught

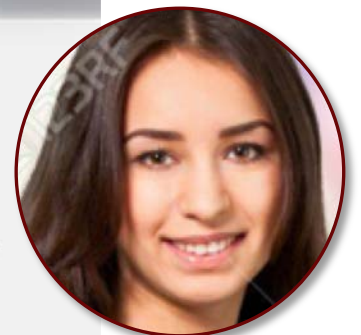
Ranked in the top 200 universities in the world (QS World Rankings 2019), we offer a wide range of postgraduate programmes.

### Postgraduate Research

Over 75% of the University's research is classified as 'world leading' or 'internationally

### Online Learning

Fit your learning around your location, work and personal commitments.





## Study Here

[Enquire Now >](#)[Undergraduate](#)[Postgraduate Taught](#)[Postgraduate Research](#)[Online Learning](#)[International](#)[Student Life](#)[Open Days, Events and Visits](#)

THE  TIMES  
THE SUNDAY TIMES  
**GOOD  
UNIVERSITY  
GUIDE  
2019**  
SCOTTISH  
UNIVERSITY  
OF THE YEAR

## Study Here

[University Home](#) / [Study Here](#)

## Degree Search

[Undergraduate](#)[Q Find Degree](#)

## Study Here

[Enquire Now >](#)[Undergraduate](#)[Postgraduate Taught](#)[Postgraduate Research](#)[Online Learning](#)[International](#)[Student Life](#)[Open Days, Events and Visits](#)

# Undergraduate

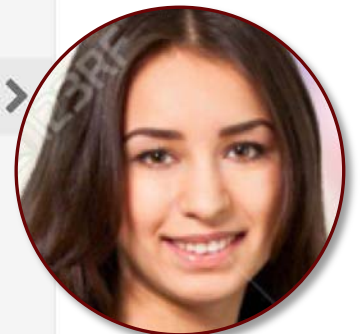
[University Home](#) / [Study Here](#) / [Undergraduate](#)[< University Home](#)[< Study Here](#)[Undergraduate](#)[Our Degrees](#)[Subject Areas](#)[Flexibility and Employability](#)[Entry Requirements](#)[Study a Language](#)[Contextual Admissions](#)[Advanced Entry from College](#)[How to Apply](#)[Finance and Funding](#)

## Degree Search

[Undergraduate](#)[Find Degree](#)

### Choice, flexibility and Enhanced Study options!

We believe your degree should be tailored to you. Read on to find out about the huge range of options available and the exciting Enhanced Study options we offer our students





Study Here

Enquire Now >

Undergraduate

Postgraduate Taught

Postgraduate Research

Online Learning

International

Student Life

Open Days, Events and Visits

# Undergraduate

University Home / Study Here / Undergraduate

< University Home

< Study Here

Undergraduate

Our Degrees

Subject Areas

Flexibility and Employability

Entry Requirements

Study a Language

Contextual Admissions

Advanced Entry from College

How to Apply

Finance and Funding

## Degree Search

Undergraduate



Enter Keywords



Find Degree



### Choice, flexibility and Enhanced Study options!

We believe your degree should be tailored to you. Read on to find out about the huge range of options available and the exciting Enhanced Study options we offer our students



Study Here

Enquire Now >

Undergraduate

Postgraduate Taught

Postgraduate Research

Online Learning

International

Student Life

Open Days, Events and Visits

# Finance and Funding

[University Home](#) / [Study Here](#) / [Undergraduate](#) / Finance and Funding

< [University Home](#)

< [Study Here](#)

< [Undergraduate](#)

Finance and Funding

Scottish and EU Students

English, Welsh and Northern Irish Students

International Students



## Students from Scotland & from non-UK EU Countries

- [Fee Information](#)
- [Scholarships and Funding](#)

Find out more



## Students from England, Northern Ireland & Wales

- [Fee Information](#)
- [Scholarships and Funding](#)

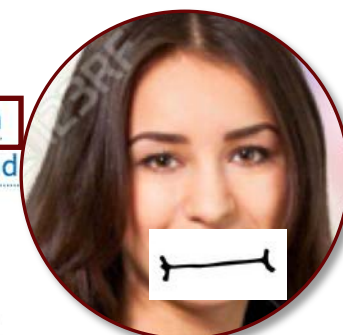
Find out more



## Students from Outside of the EU (International)

- [Fee Information](#)
- [Scholarships and Funding](#)

Find out more



Study Here

Enquire Now >

Undergraduate

Postgraduate Taught

Postgraduate Research

Online Learning

International

Student Life

Open Days, Events and Visits

## Tuition Fees and Living Costs

[University Home](#) / [Study Here](#) / [International](#) / [Finance and Funding](#) / Tuition Fees and Living Costs

< University Home

< Study Here

< International

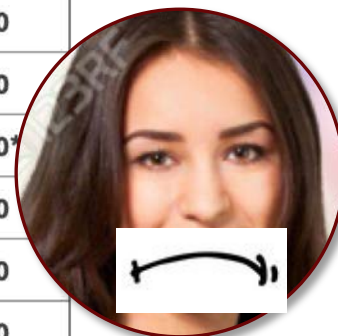
Finance and Funding

Tuition Fees and Living Costs

Scholarships and Funding

### International Student Fees for 2019/2020

Undergraduate Arts-based Programmes	£15,300
Undergraduate Science-based Programmes	£19,300
Undergraduate Clinical Medicine (MBChB)	£40,500
Postgraduate Arts-based Programmes & Select LLM Programmes	£15,900*
Postgraduate Science-based Programmes	£20,000*
Graduate Business School MSc & Select LLM Programmes	£17,900*
LLM with Professional Skills	£19,800
Graduate Business School MBA	£20,000
Engineering	£21,000*
Graduate Business School MBA Energy Management	£21,700
Art & Social Science based PhD	£15,900
Science based PhD	£20,000





## Study Here

[Enquire Now >](#)[Undergraduate](#)[Postgraduate Taught](#)[Postgraduate Research](#)[Online Learning](#)[International](#)[Student Life](#)[Open Days, Events and Visits](#)

# Finance and Funding

[University Home](#) / [Study Here](#) / [International](#) / Finance and Funding[University Home](#)[Study Here](#)[International](#)[Finance and Funding](#)[Tuition Fees and Living Costs](#)[Scholarships and Funding](#)

## How Much Will It Cost Me?

[Our Tuition Fees](#)

When you are thinking about studying overseas, it is important that you understand all the costs involved and budget accordingly. It is essential to budget for your studies prior to leaving your home country and to arrange all your funding for BOTH your tuition fees and your living costs. To help you budget we have included some information on the cost of study, but please remember these are only a guide and the costs will vary from student to student. You can also use the [International Student Calculator](#) to help plan and manage your budget for your studies in the UK.



## Students

Student Life

Academic Life

Support & Wellbeing

Fees & Finance

Feedback

New Students

Graduation

Events

# Tuition Fees

[University Home](#) / [Students](#) / [Fees & Finance](#) / Tuition Fees

< [University Home](#)

< [Students](#)

< [Fees & Finance](#)

[Tuition Fees](#)

[Tuition Fee Rates](#)


[Funding for Undergraduate UK and EU students](#)

[Part-time Student Fees](#)

[Erasmus and Study Abroad Fees](#)

- Information on [Tuition Fee Rates](#)

In this section you can find details of the tuition fee rates for the current and previous academic years. These pages also contain information on the refund policy, miscellaneous charges and, staff tuition fees.

- You can [make payments](#) towards your tuition fees and accommodation fees in a number of ways.
- The [Student Debt Policy](#)  details the University's expectations and procedures for the collection of all student-related debt.

Sponsored Students



## Students

Student Life

Academic Life

Support & Wellbeing

Fees & Finance

Feedback

New Students

Graduation

Events

# Tuition Fee Rates

[University Home](#) / [Students](#) / [Fees & Finance](#) / [Tuition Fees](#) / Tuition Fee Rates

< [University Home](#)

< [Students](#)

< [Fees & Finance](#)

[Tuition Fees](#)

[Tuition Fee Rates](#)

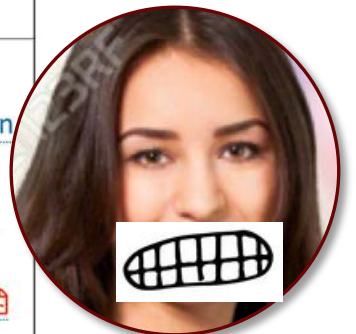
[Funding for Undergraduate UK and EU students](#)

[Part-time Student Fees](#)

[Erasmus and Study Abroad Fees](#)

In line with other universities, tuition fees are subject to annual review and the University reserves the right to routinely increase these from year to year. Unless you are on a fixed fee programme, you should budget for an increase of between 5% and 9% per annum. Please see the appropriate link below for further details.

2019 / 20			
Undergraduate	Postgraduate	Other Fees	Tuition Fee Policies
<ul style="list-style-type: none"> <li><a href="#">Home/EU/RUK students</a></li> <li><a href="#">Overseas students</a></li> </ul>	<ul style="list-style-type: none"> <li><a href="#">Research</a></li> <li><a href="#">Taught</a></li> </ul>	<ul style="list-style-type: none"> <li><a href="#">Undergraduate part-time &amp; online learning students</a></li> </ul>	<ul style="list-style-type: none"> <li><a href="#">Refund Policy</a></li> <li><a href="#">RUK students admitted in 2019/20</a></li> <li><a href="#">Undergraduate students</a></li> <li><a href="#">Postgraduate students</a></li> </ul>







## INTERNATIONAL STUDENTS

### TUITION FEES 2019/20 ACADEMIC YEAR

#### NOTES:

- Tuition fees given below are listed at the full-time rate. Part-time fee information can be found in the Part-time Student Fees section.
  - From 2014/15, the University introduced a fixed fee structure for undergraduate and postgraduate research students who are classified as International for fee purposes. This means that undergraduate students classified as International who commence study in 2014/15 and subsequently, will be charged at the rate applicable to their year of entry for the remainder of their programme (note, International undergraduate students on programmes that are charged on a modular basis are not eligible for fixed fees). International students who started before 1 August 2014 will continue to pay the appropriate 2014/15 fee. However, students who have withdrawn and are re-admitted after an interruption of more than one academic year will be charged at the advertised tuition fee rate set for the year of re-admission. The fixed fee arrangement does not apply to students studying Medicine or specific modular programmes.
  - Overseas students (excluding Medicine) admitted from 2014/15 and subsequently will be eligible for an International Undergraduate Scholarship. Students must have completed 3 continuous years of study before being eligible for the scholarship in the 4th year. Further information is available here [www.abdn.ac.uk/study/international/international-undergraduate-scholarship-972.php](http://www.abdn.ac.uk/study/international/international-undergraduate-scholarship-972.php)
  - Some programmes are charged on a modular basis, i.e. on the basis of the number of credits that a student is taking in an academic year. Students on modular programmes are charged the same fee rate regardless of whether they are full-time or part-time. If the programme is charged on a modular basis, this will be clearly marked below.
  - In line with other universities, tuition fees are subject to annual review and the University reserves the right to routinely increase these from year to year. Students undertaking modular courses should budget for an increase of between 5% and 9% per annum.
  - [All students are encouraged to read the University Refund Policy. The Refund Policy will outline fee liability in the event a student withdraws during the academic year.](#)
- ~ signifies no new entrants to that programme in that academic year - tbc signifies fee to be confirmed



BUSINESS MANAGEMENT	ARTS	£13,000	£13,800	£14,300	£14,600	£15,300
BUSINESS MANAGEMENT AND ECONOMICS	ARTS	£13,000	£13,800	£14,300	£14,600	£15,300
BUSINESS MANAGEMENT AND ENGLISH	ARTS	£13,000	£13,800	£14,300	£14,600	£15,300
BUSINESS MANAGEMENT AND FINANCE	ARTS	£13,000	£13,800	£14,300	£14,600	£15,300
BUSINESS MANAGEMENT AND FRENCH (4 YEAR & 5 YEAR OPTIONS)	ARTS	£13,000	£13,800	£14,300	£14,600	£15,300
BUSINESS MANAGEMENT AND GAELIC STUDIES	ARTS	£13,000	£13,800	£14,300	£14,600	£15,300
BUSINESS MANAGEMENT AND GEOGRAPHY	ARTS	£13,000	£13,800	£14,300	£14,600	£15,300
BUSINESS MANAGEMENT AND GERMAN (4 YEAR & 5 YEAR OPTIONS)	ARTS	£13,000	£13,800	£14,300	£14,600	£15,300
BUSINESS MANAGEMENT AND HISPANIC STUDIES (4 YEAR & 5 YEAR OPTIONS)	ARTS	£13,000	£13,800	£14,300	£14,600	£15,300

PROGRAMME	AREA OF STUDY	STUDENTS ADMITTED IN 2015/16	STUDENTS ADMITTED IN 2016/17	STUDENTS ADMITTED IN 2017/18	STUDENTS ADMITTED IN 2018/19	STUDENTS ADMITTED IN 2019/20
BUSINESS MANAGEMENT AND HISTORY	ARTS	£13,000	£13,800	£14,300	£14,600	£15,300
BUSINESS MANAGEMENT AND INFORMATION SYSTEMS	ARTS	£13,000	£13,800	£14,300	£14,600	£15,300
BUSINESS MANAGEMENT AND INFORMATION SYSTEMS	SCIENCE	~	~	£18,000	£18,400	£19,300
BUSINESS MANAGEMENT AND	ARTS					









aberden college tuition fees busines



[All](#)

[News](#)

[Images](#)

[Maps](#)

[Shopping](#)

[More](#)

[Settings](#)

[Tools](#)

About 1,750,000 results (0.30 seconds)

Showing results for **aberdeen** college tuition fees **business**

Search instead for **aberden** college tuition fees busines

### Tuition Fees and Living Costs - University of Aberdeen

<https://www.abdn.ac.uk> › [study](#) › [international](#) › [tuition-fees-and-living-co...](#) ▼

\*Please be advised that some programmes have different **tuition fees** from those ... An international student starting our undergraduate Master of Arts in **Business** ...

### Tuition Fees | Students | The University of Aberdeen

<https://www.abdn.ac.uk> › [students](#) › [finance](#) › [tuition-fees](#) ▼

In this section you can find details of the **tuition fee** rates for the current and ... The Student Debt Policy details the **University's** expectations and procedures for ...

### Tuition Fee Rates | Students | The University of Aberdeen

<https://www.abdn.ac.uk> › [students](#) › [finance](#) › [tuition-fee-rates-201819-1916](#) ▼

In line with other universities, **tuition fees** are subject to annual review and the **University** reserves the right to routinely increase these from year to year. Unless ...

### International Students - University of Aberdeen - Complete ...

<https://www.thecompleteuniversityguide.co.uk> › [aberdeen](#) › [international](#) ▼

Read the complete guide to **University of Aberdeen**. League table rankings, **fees**, courses, accommodation, sports and more. ... A wide range of programmes enable **students** to apply theoretical knowledge across the arts, **business**, sciences, ...

## Students

Student Life

Academic Life

Support & Wellbeing

Fees & Finance

Feedback

New Students

Graduation

Events

# Tuition Fee Rates

[University Home](#) / [Students](#) / [Fees & Finance](#) / [Tuition Fees](#) / Tuition Fee Rates

< [University Home](#)

< [Students](#)

< [Fees & Finance](#)

[Tuition Fees](#)

[Tuition Fee Rates](#)

[Funding for Undergraduate UK and EU students](#)

[Part-time Student Fees](#)

[Erasmus and Study Abroad Fees](#)

In line with other universities, tuition fees are subject to annual review and the University reserves the right to routinely increase these from year to year. Unless you are on a fixed fee programme, you should budget for an increase of between 5% and 9% per annum. Please see the appropriate link below for further details.

2019 / 20			
Undergraduate	Postgraduate	Other Fees	Tuition Fee Policies
<ul style="list-style-type: none"> <li><a href="#">Home/EU/RUK students</a></li> <li><a href="#">Overseas students</a></li> </ul>	<ul style="list-style-type: none"> <li><a href="#">Research</a></li> <li><a href="#">Taught</a></li> </ul>	<ul style="list-style-type: none"> <li><a href="#">Undergraduate part-time &amp; online learning students</a></li> </ul>	<ul style="list-style-type: none"> <li><a href="#">Refund Policy</a></li> <li><a href="#">RUK students admitted in 2019/20</a></li> <li><a href="#">Undergraduate students</a></li> <li><a href="#">Postgraduate students</a></li> </ul>

## RECAP

Carousel

Inconsistent headings and links

Unclear link destination

Everything “Above the Fold”

Overwhelming navigation

Inconsistent heading structure

No story telling throughout

Inconsistent to web standard expectations

**Wasn't like Lingscars.com**



WORK HARD

&

**HAVE FUN**



# I'm Josh



josalaza



joshuaasalazar



joshuasalazar1

Slides available at  
**[joshuasalazar.net](http://joshuasalazar.net)**

## **Resources:**

[Laws of UX](#)

[Consistency in Design is the Wrong Approach](#)

[Designing for the Scent of Information](#)

[Rocket Surgery Made Easy](#)